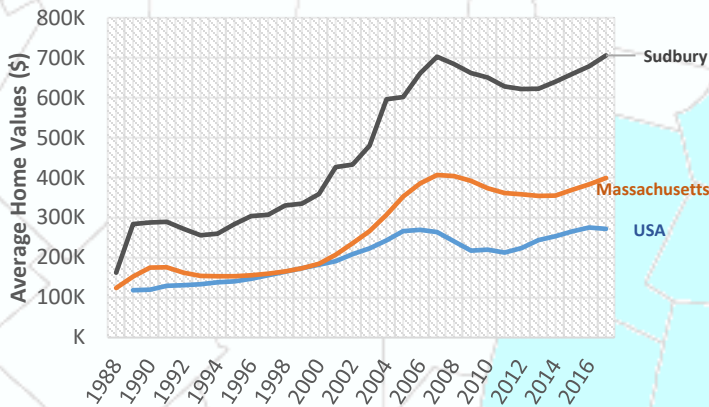


Rising Home Values



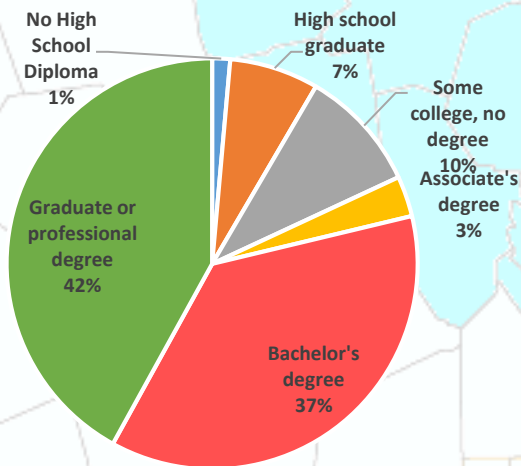
Beyond the year to year averages, in February 2017, the median single family home in Sudbury sold for \$778,000¹. This is much higher than the state median sale price for the same month which was \$319,000¹ and the national median for February which was \$228,200².

Payroll



From Q2 2015 to Q2 2016, the payroll for all places of employment in Sudbury was \$444,999,767.³ Since the recession, the Town's payroll saw an increase. However, the closing of Raytheon in 2016 has resulted in a downward payroll trend.

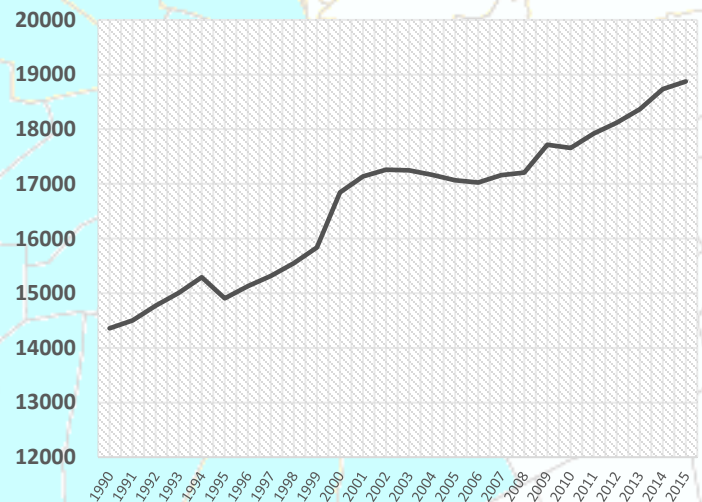
Highly Educated



2011-2015 ACS (U.S. Census Bureau)

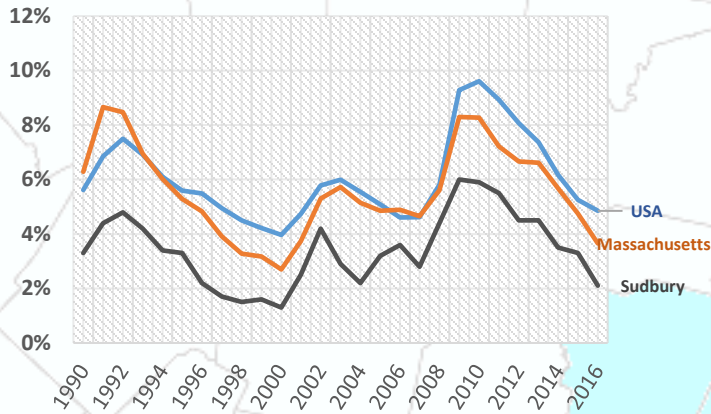
Sudbury has a highly educated population compared to the state and to the nation with 79% of residents having a bachelor's degree or higher. During the same time 40.5% of people in Massachusetts had a bachelor's degree or higher, while only 29.8% of all people in the U.S. had one.⁴

Growing Population

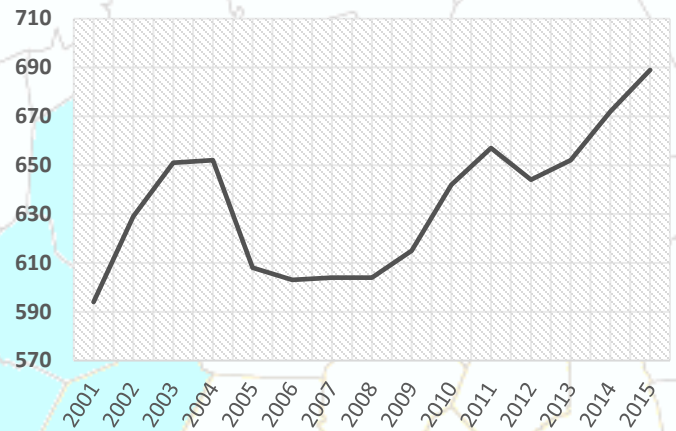


The population of Sudbury has been increasing steadily. In 2000, the population of Sudbury was 16,841 this increased to 17,659 by 2010, and in 2015, the population of Sudbury was estimated to be approximately 18,874.⁵

Low Unemployment



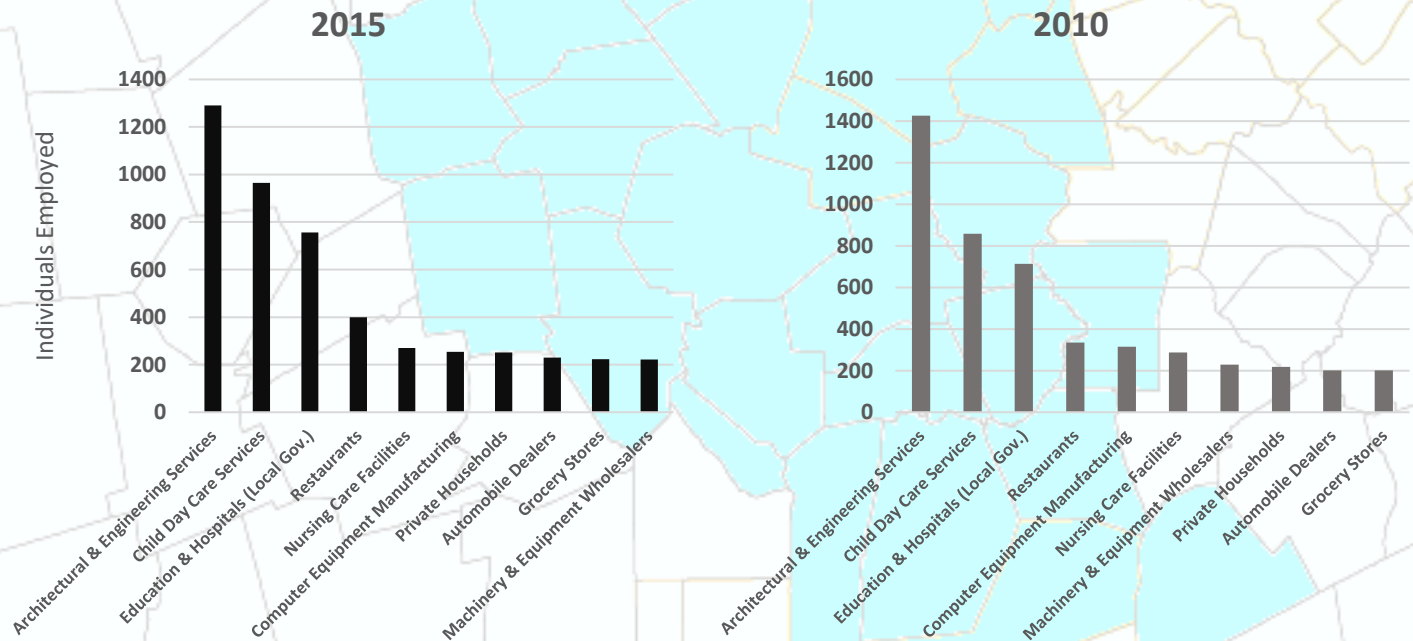
Expanding Employers



Beyond the year to year averages, in February 2017, the unemployment rate in Sudbury was 2.9%. This is lower than the state and 495/MetroWest regional unemployment rates, which were both 3.4%, and much lower than the national unemployment rate of 4.8%³

The number of employers in Sudbury has been increasing at a steady rate. In 2001, there were 594 employers in the town, and by Q2 2016 this number had increased to 699.³

Top Ten Industries In Sudbury



Top Ten Industries data and analysis conducted by the Public Policy Center at UMass Dartmouth for the 495/MetroWest Partnership in support of the 495/MW Suburban Edge Community Commission utilizing 2014 US Census Bureau Local Employment Dynamics. For more information on these data sets please visit <http://lehd.ces.census.gov/>

Sources:

- Mass.gov Municipal Databank <http://www.mass.gov/dor/local-officials/municipal-databank-and-local-aid-unit/databank-reports-new.html> (Line graph municipal data)
 1. The Warren Group <http://www.twgstats.com/tssub/start.asp> 2. Ycharts Average US Home Values https://ycharts.com/indicators/sales_price_of_existing_homes
 3. Mass.gov Labor and Workforce Development <http://www.mass.gov/lwd/economic-data/> 4. US Census Bureau <https://www.census.gov/> 5. UMASS Donahue Institute <http://www.donahue.umassp.edu/news-events/institute-news/new-population-estimates-for-mass-released-interactive-map-available>